



COSTAN 

GranOntario-GranDrake

GranFit



Epta



The most invisible, the most visible

COSTAN 



GranOntario
GranDrake

This information is confidential and was prepared by Epta solely for our internal use. It is not to be relied on by any third party without Epta prior written consent. Marketing 09/2020


Epta

New life to the frozen department

GranOntario and **GranDrake**,

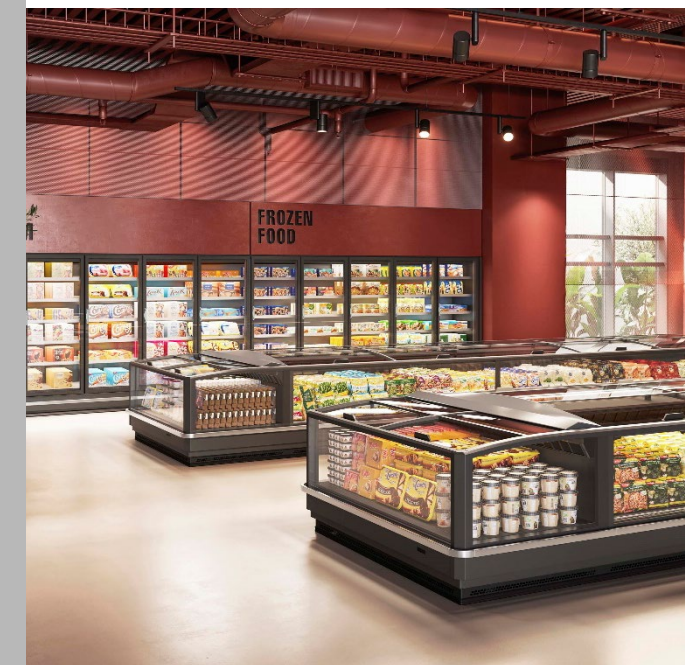
Epta range that renews the frozen food department by increasing and optimizing the display possibilities.

Design, maximization of the food visibility, combined with great display volumes, flexibility and customization, are the peculiarities which characterize GranOntario and GranDrake. Hence the possibility of **creating sales formats** which give **uniqueness to the frozen food department** of each store.



BACK TO SUMMARY

COSTAN



This information is confidential and was prepared by Epta solely for our internal use. It is not to be relied on by any third party without Epta prior written consent. Marketing 09/2020

**GranOntario
GranDrake**

PRODUCT OVERVIEW



Break out the traditional layout

The frozen food department tends to be organized according to schematic lay-outs with a strict division between horizontal and vertical food presentation.

GranOntario and **Grandrake** are an invitation to break the mold by experimenting new formats combining the horizontal display in the chest and the vertical display, with the final aim of maximizing the store turnover.

The **family feeling** between **GranOntario** and **Grandrake** islands with the vertical **GranBering** and the semi-vertical **GranSesia**, where the combination of design and essentiality emphasizes the presentation of frozen products, makes it possible to create refined, harmonious, pleasant and welcoming ambiances in stores of all sizes.



GranOntario
Grandrake

PRODUCT OVERVIEW

Overview

The range

With **GranOntario** and **GranDrake** islands range, maximum transparency, visibility and high display volumes live in the frozen food department revolutionizing it.



GranOntario L (Large)



GranOntario N (Narrow)



GranOntario C (Compact)



GranDrake



BACK TO SUMMARY

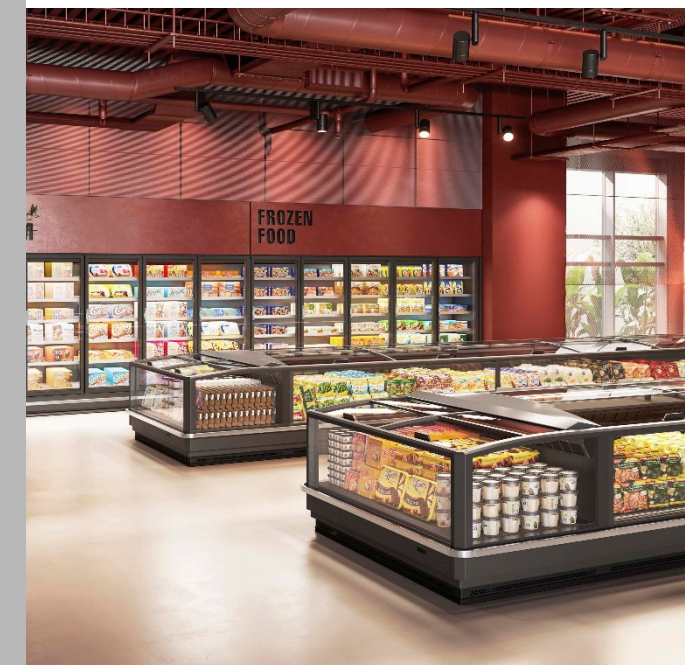


This information is confidential and was prepared by Epta solely for our internal use. It is not to be relied on by any third party without Epta prior written consent. Marketing 09/2020

**GranOntario
GranDrake**

PRODUCT OVERVIEW





The most significant advantages compared to the previous range:

- Total glass effect: **100% of food displayed** is visible against 64% of Tortuga Ultra
- Increase in the **food volumes** displayed: **+8,75%** vs Tortuga Ultra 2000
- **Rounded End of Line** design for an enhanced harmony with the linear cabinets and to be more appealing for promotions
- Class **3L1** according to EN ISO23953-2 **at -29°C** evaporating temperature, as GranBering
- Energy efficiency: **-24% GranOntario L energy consumptions** vs Tortuga Ultra 2000



GranOntario - GranDrake

Total food visibility
and essential design to leave the stage to the goods and make the frozen department more attractive

High display capacity
to maximize the ratio between food volumes displayed and footprint

Great display flexibility
to adapt to different food categories and formats and to meet seasonal requirements



Rounded End of Line
designed to emphasize the area dedicated to promotions

Digitalization
integration of digital technologies to enhance cabinets functionalities, efficiency and user-friendliness

Sustainability
performance and energy saving



BACK TO SUMMARY

COSTAN



GranOntario GranDrake

PRODUCT OVERVIEW



This information is confidential and was prepared by Epta solely for our internal use. It is not to be relied on by any third party without Epta prior written consent. Marketing 09/2020

Overview

Range & Offer

GranOntario L (Large)

Width: 2020mm without bumper – 2110mm with s/steel bumper

Lengths: 1885-2500-3750mm linear, 2030mm end of line

Covers: 3 curved push glasses on linear, 2 curved push glasses on EOL

Loading line: 435mm linear, 400mm end of line

Temperature class: 3L1 for linear and end of line

3M1 by changing the set point on site

Evaporating temperature: -29°C.

Lighting position: without, rear and handrail (always both of them together)

LED lighting: Advance or Value

Fluids : R404A, R422D, R448A, R449A, R407A/C/F, R410A, R452A, CO₂

Controllers: Carel, Danfoss, Dixell, Eliwell, Wurm

Controllers position: single side or double side display

Defrost: electrical

Electronics: SwitchON

Endwall: panoramic with bumper or without bumper

Bumpers: brushed stainless steel 60x20mm (Advance aesthetics)

Aesthetics, lids frame, silkscreens, corners: Dark grey (RAL 7016) or Light Grey (RAL 7035)

Accessories: tilttable wired grids, dividers, ticket holders

Energy Class



Advance aesthetics



Value aesthetics



BACK TO SUMMARY

COSTAN



GranOntario GranDrake

PRODUCT OVERVIEW

The Epta logo, featuring a stylized 'E' and 'P' inside a circle, with the word 'Epta' below it.

This information is confidential and was prepared by Epta solely for our internal use. It is not to be relied on by any third party without Epta prior written consent. Marketing 09/2020

Overview

Range & Offer

GranOntario N (Narrow)

Width: 1680mm without bumper – 1770mm with s/steel bumper

Lengths: 1885-2500-3750mm linear, 1690mm end of line

Covers: 3 curved push glasses on linear, 2 curved push glasses on EOL

Loading line: 435mm linear, 400mm End of line

Temperature class: 3L1 for linear and end of line

3M1 by changing the set point on site

Evaporating temperature: -29°C

Lighting position: without, rear and handrail (always both)

LED lighting: Advance or Value

Fluids : R404A, R422D, R448A, R449A, R407A/C/F, R410A, R452A, CO₂

Controllers: Carel, Danfoss, Dixell, Eliwell, Wurm

Controllers position: single side or double side display

Defrost: electrical

Electronics: SwithcON

Endwall: panoramic with bumper or without bumper

Bumpers: brushed stainless steel 60X20mm (Advance aesthetics)

Aesthetics, lids frame, silkscreens, corners: Dark grey (RAL 7016) or Light Grey (RAL 7035)

Accessories: tiltable wired grids, dividers, ticket holders

Energy Class



Advance aesthetics



Value aesthetics



BACK TO SUMMARY

COSTAN



GranOntario GranDrake

PRODUCT OVERVIEW



This information is confidential and was prepared by Epta solely for our internal use.
It is not to be relied on by any third party without Epta prior written consent. Marketing 09/2020

Overview

Range & Offer

GranOntario C (Compact)

Width: 1090mm without bumper – 1175mm with s/steel bumper

Lengths: 2500-3750mm

Covers: curved sliding glasses

Loading line: 430mm

Temperature class: 3L1

3M1 by changing the set point on site

Evaporating temperature: -29°C

Lighting position: without and only on the air inlet area

LED lighting: Advance or Value

Fluids : R404A, R422D, R448A, R449A, R407A/C/F, R410A, R452A, CO₂

Controllers: Carel, Danfoss, Dixell, Eliwell, Wurm

Controllers position: single side (front)

Defrost: electrical

Electronics: SwitchON

Endwall: panoramic with bumper or without bumper

Bumpers: brushed stainless steel (60X20mm)

Aesthetics, lids frame, serigraphs, corners: Dark grey (RAL 7016) or Light Grey (RAL 7035)

Accessories: tilttable wired grids, dividers, ticket holders

Energy Class **To be defined**

Advance aesthetics



Value aesthetics



BACK TO SUMMARY

COSTAN



GranOntario GranDrake

PRODUCT OVERVIEW



This information is confidential and was prepared by Epta solely for our internal use.
It is not to be relied on by any third party without Epta prior written consent. Marketing 09/2020

Overview

Range & Offer

GranDrake

Widths: 1075mm without bumper – 1115mm with s/steel bumper

Lengths: 1885-2500-3750 linear, 2245mm end of line

Covers: 2 curved push glasses on linear, 2 curved push on end of line

Loading line 430mm linear, 400mm End of line

Temperature class: 3L1 for linear and end of line

3M1 by changing the set point on site

Evaporating temperature: -29°C

Lighting position: without, rear and handrail (always both)

LED lighting: Advance and Value

Fluids : R404A, R422D, R448A, R449A, R407A/C/F, R410A, R452A, CO₂

Controllers: Carel, Danfoss, Dixell, Eliwell, Wurm

Controllers position: single side or double side display

Defrost: electrical

Electronics: SwitchON

Endwall: panoramic with bumper or without bumper

Bumpers: brushed stainless steel (60X20mm)

Aesthetics, lids frame, silkscreens, corners: Dark grey (RAL 7016) or Light Grey (RAL 7035)

Accessories: tilttable wired grids, dividers, ticket holders,

Energy Class



Advance aesthetics



Value aesthetics



BACK TO SUMMARY

COSTAN



GranOntario GranDrake

PRODUCT OVERVIEW



This information is confidential and was prepared by Epta solely for our internal use. It is not to be relied on by any third party without Epta prior written consent. Marketing 09/2020

COSTAN 

www.costan.com



COSTAN 



Epta S.p.A. participates in the ECC programme for: Refrigerated display cabinets (RDC).
Check ongoing validity of certificate online:
www.eurovent-certification.com
or using www.certiflash.com