



COSTAN 

Batik Integral

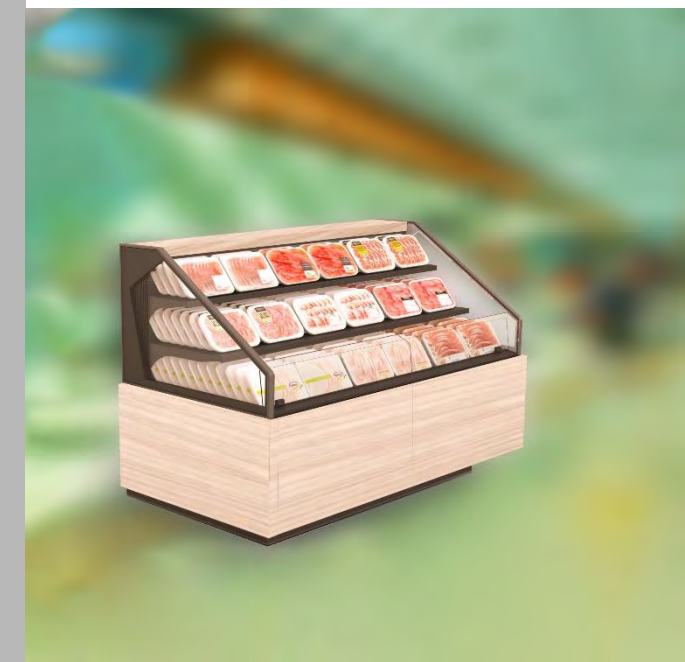
PRODUCT OVERVIEW



The
classy
solution for
placing
anywhere in
a store



COSTAN 



Batik
Integral
PRODUCT OVERVIEW

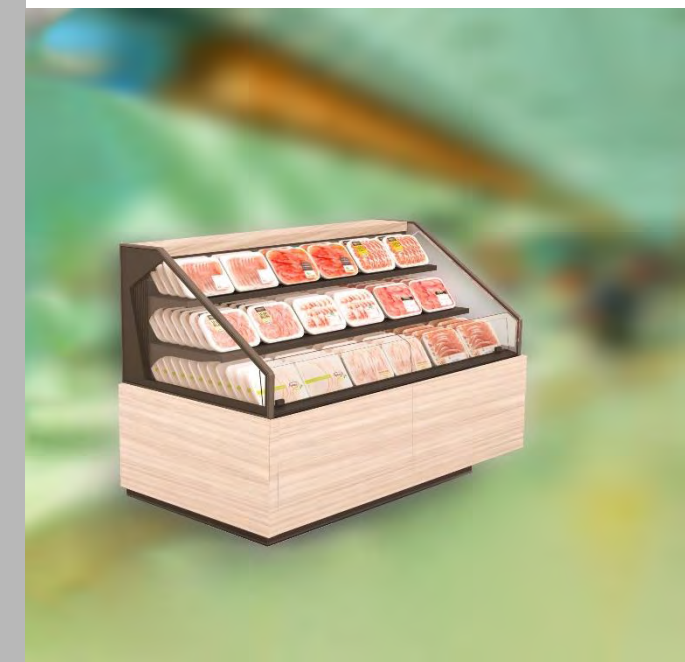

Epta

Overview | Product at a glance

The solution suitable for any store position



COSTAN 



Batik
Integral
PRODUCT OVERVIEW


Epta

Overview | Highlights

The Integral High Front Semivertical, ideal for fresh food

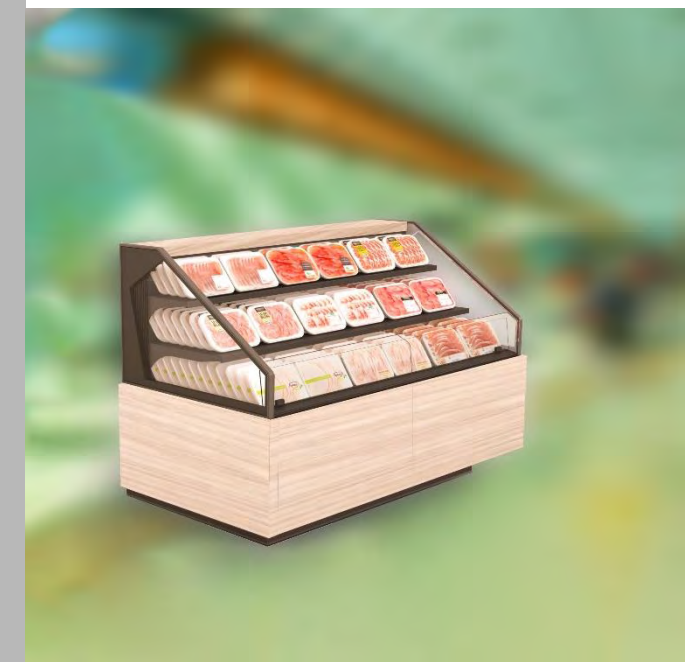
Looks like a remote

A true member of the Outfit family

Can be placed anywhere



COSTAN 



Batik
Integral
PRODUCT OVERVIEW


Epta

Overview

Product range

Batik Integral cabinets are available in:

1 Height
• H12

2 Widths
• Compact (C)
• Narrow (N)

3 Lengths
• 125
• 188
• 250 linears

2 Aesthetics
• Design
• Studio

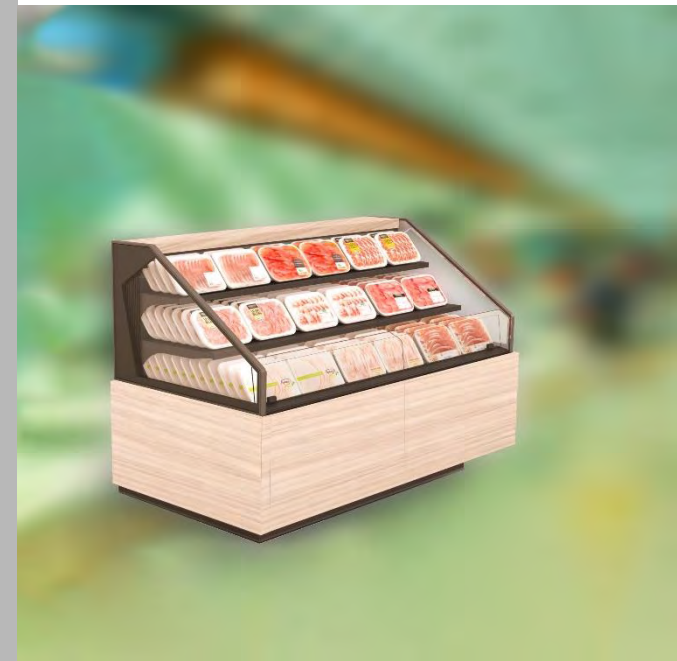
Temperature class
• 3H
• 3M2

LED lighting
• Shelves
• Plinth

Fluid
• R290

Ticket holder position
• Shelves
• Front

Ticket holder type
• Universal rail
• Paper
(25, 30, 40, 52mm)
• Electronic



Batik
Integral
PRODUCT OVERVIEW



Overview

Availability

Availability H1200 Integral

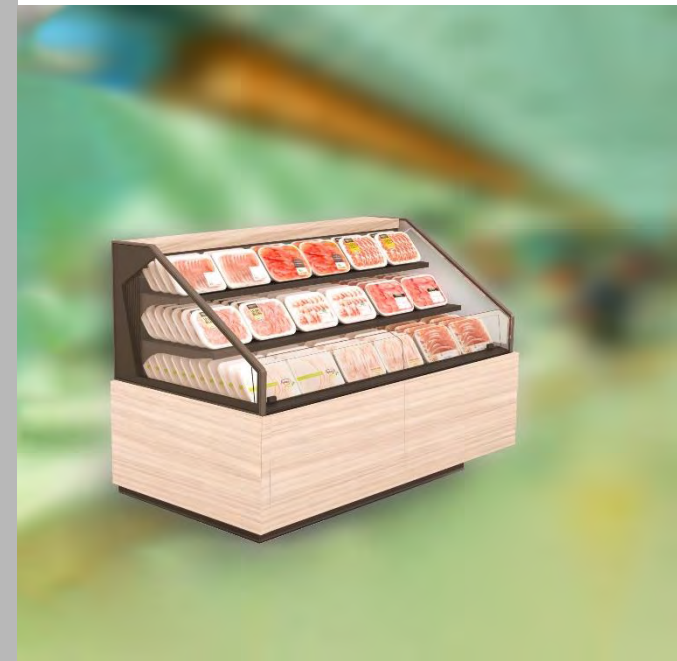


First order loading
Week 42/2020



First delivery
Week 47/2020

COSTAN 



Batik
Integral
PRODUCT OVERVIEW



COSTAN 

www.costan.com



COSTAN 



Epta S.p.A. participates in the ECC programme for: Refrigerated display cabinets (RDC).
Check ongoing validity of certificate online:
www.eurovent-certification.com
or using www.certiflash.com

