

NORDICLINE IS7

Freezer islands



Premium presentation of all frozen products.

Lowest energy
consumption in class.



Energy efficiency with excellent product visibility

NordicLine IS7 freezer island enables food retailers to present a high volume of goods with an attractive display cabinet while saving energy and lowering their stores' CO2 footprint. The installation and commissioning of stores is faster thanks to a high degree of prefabrication of the cabinet modules.

People's lives are only getting busier so they are searching for even more convenience in the future, which increases the sales of frozen food constantly. With the new NordicLine IS7 freezer islands the frozen food is the hero with the beautiful display and high-volume capacity. Combined with the high focus in merchandise the new freezer family additionally brings top performance in energy efficiency.

NordicLine IS7 is developed and proven to be the best in its class in its product range regarding energy efficiency on the market. NordicLine IS7 uses 15-45% less energy compared to other freezer islands in the market. For food retailers this means cost savings with lower operating costs, higher efficiency and faster return on investment. The energy efficiency of the cabinets allows optimization of the refrigeration system technology within the store.

Designed to focus on excellent product visibility

In addition to the energy performance, the development team has paid special attention to making frozen food as the hero product line within grocery retail. The wide glass surfaces of NordicLine IS7 give an unobstructed view to the products displayed. Food retailers can choose between a variety of lighting options, which further improve the product category presentation. The stylish design is combined with one of the highest display areas in the market, giving the food retailers the opportunity to present more frozen food produce per footprint than earlier.

NordicLine IS7 product design follows the same design as our other main remote refrigeration cabinets, providing overall eye-pleasing aesthetics to the whole retail store and keeping merchandise in focus.

Reduced on-site installation time

NordicLine IS7 is designed to save time during installation. The lid system is installed at the factory making it fully functional and ready-to-use when the cabinets reach the store. For longer island lines the multiplexing of the cabinets has been made easy due to the high level of pre-fabrication. The installation time is further reduced by pre-installed refrigeration piping. A factory-installed standard piping system ensures fast and agile installation and multiplexing. All these details save pure installation time making it faster which allows food retailers shorter store closures and increases sales opportunities.

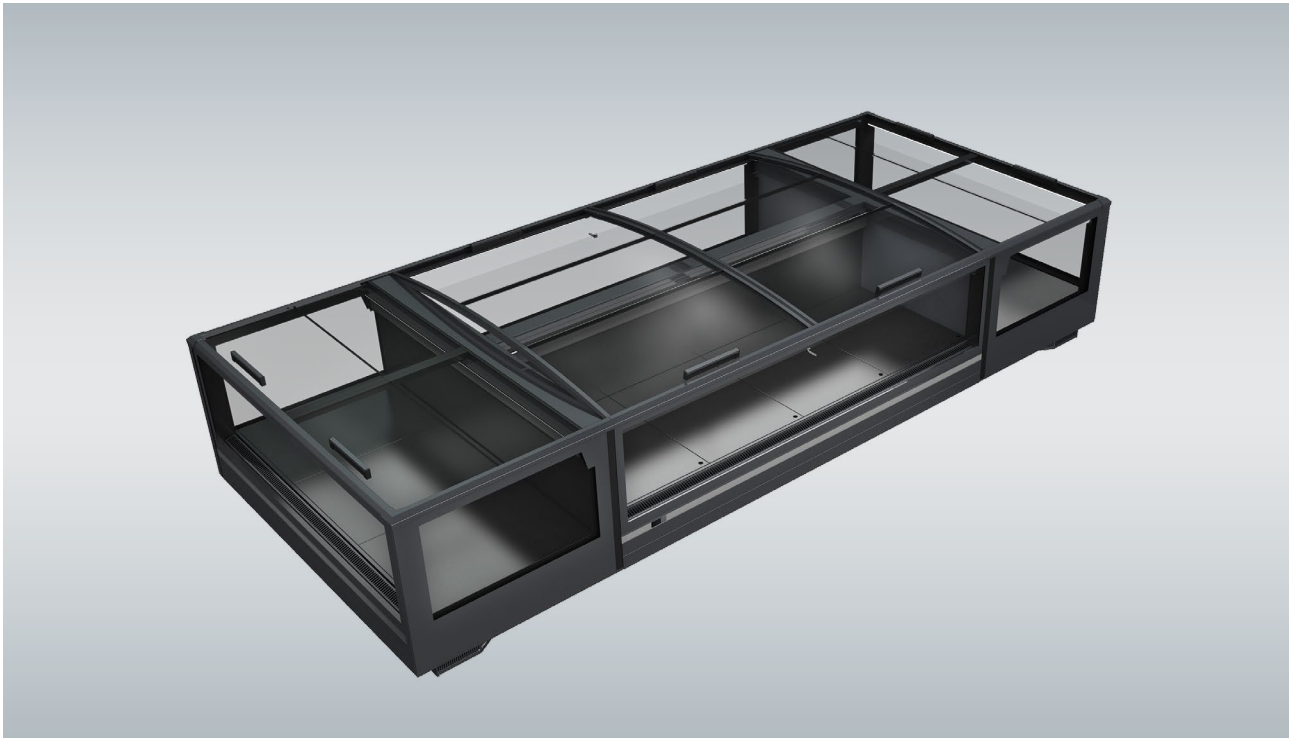




CHOOSE THE NORDICLINE IS7 FOR

- Best in class energy efficiency
- 20% higher total display area compared to previous models
- Beautiful display with the large glass panels
- Faster installation with high level of prefabrication
- Integrated and seamless design
- A selection of accessories for improved merchandising

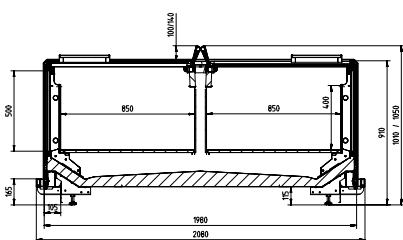


TECHNICAL SPECIFICATIONS

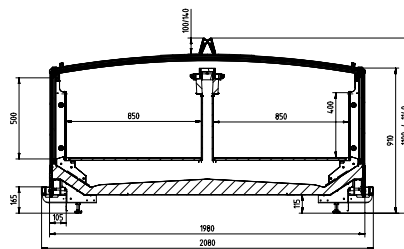


NordicLine IS7	IS7-200	IS7-100
External length (mm)	1875, 2500, 3750, EOL 2000	1875, 2500, 3750
External height (mm)	900	900
External depth (mm)	1980, EOL1070	1070
Temperature range (°C)	-23 to -21	-23 to -21
Refrigerants	R744 (CO2)	R744 (CO2)
Energy efficiency class		

NordicLine IS7 200-90 flat lids

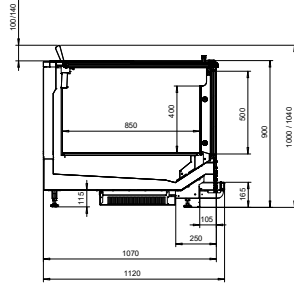


NordicLine IS7 200-90 curved lids

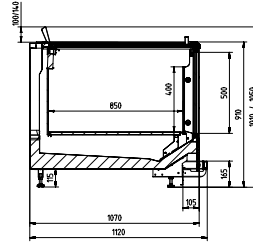


TECHNICAL SPECIFICATIONS

NordicLine IS7 100-90 flat lids

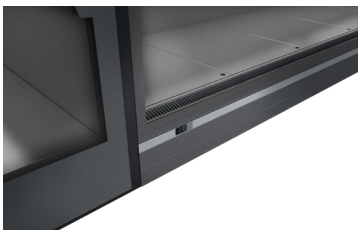


NordicLine IS7 200-90 EOL

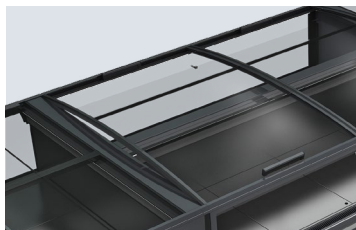


EQUIPMENT OPTIONS

STANDARD EQUIPMENT



Aluminium front trim



Curved push or slide flat glass lids

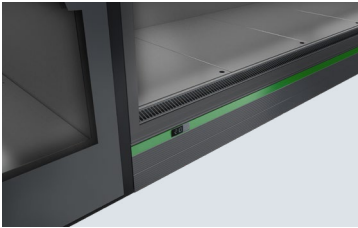
- Integrated plastic bumper trim
- Perforated plinth trims
- Aluminium front trim
- Glass (front facing) panels
- Handrail color RAL7016

- Glass lids: curved push or slide flat
- Temperature display
- Fan evaporator and electronic expansion valve, R744

- Single or island configuration (installation layout)

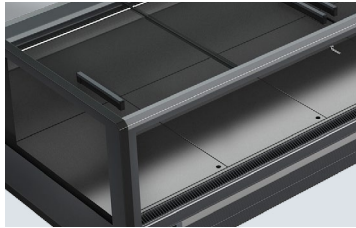
EQUIPMENT OPTIONS

OPTIONAL EQUIPMENT



Color front trim

- LED lighting (3000/4000/5000-5700K, configurations: handrail, air blow, side)
- Handrail color RAL7004

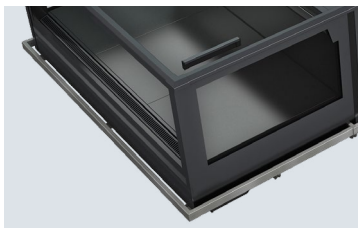


Handrail color RAL7004

- Color alum. trim, front (ext color instead of alu)
- Delivered without front trim (for shopfitting)
- PipeMost (prefabricated piping)

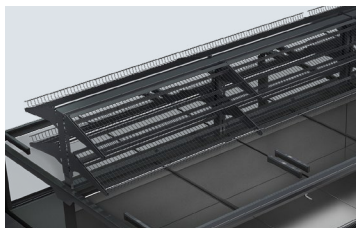
- Pressure transmitter
- Additional display
- Plinth sealing gasket

OPTIONAL ACCESSORIES



Stainless steel bumper

- Grid divider, adjustable bottom grid
- Stainless steel bumper trim kit



Ambient shelving

- Ambient shelving (superstructure) 1 or 2 levels
Lights, front stopper, price trim holder



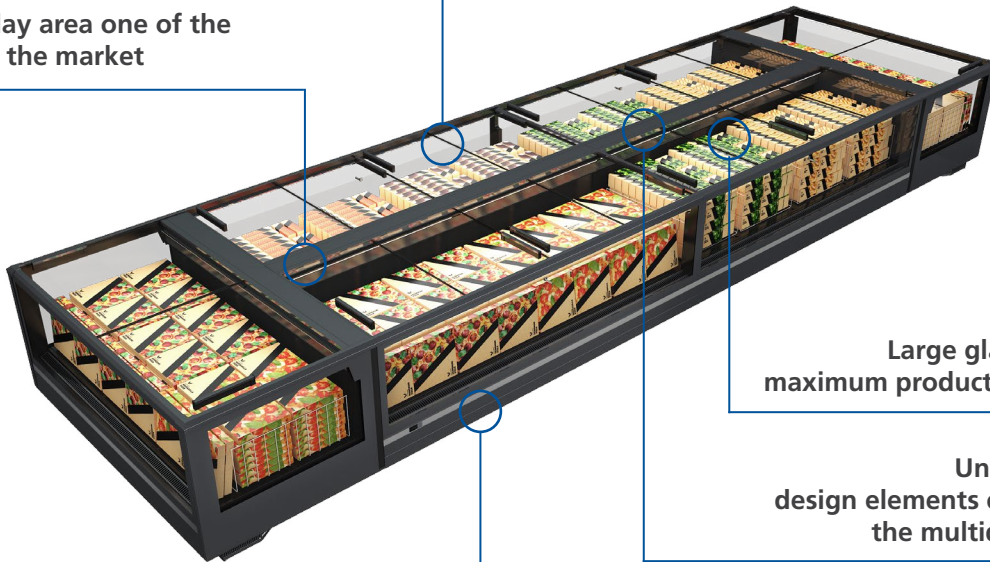
Price trim holders

- Price trim holders (39/52/60, black/grey/transparent)

BENEFITS

Excellent energy efficiency

Total display area one of the highest in the market



Large glass panels for maximum product presentation

Unbroken lines - design elements common with the multideck products

High level of prefabrication to minimise on site installation time

NordicLine IS7 - a high volume freezer island with an attractive product display while saving energy and lowering stores CO₂ footprint.



www.costan.com

Follow us on:     by Epta